



**Interreg**  
España - Portugal

Fondo Europeo de Desarrollo Regional  
Fundo Europeu de Desenvolvimento Regional



**albufeira**

# ALBUFEIRA PROJECT

## A flowing cooperation

Promoting and protecting the good condition of shared water bodies between Spain and Portugal. · #Miño-Sil #Duero #Tajo #Gadiana

**Fernando Magdaleno Mas**

Water Directorate

Ministry of the Ecological Transition  
and the Demographic Challenge

*On behalf of the Project team*

# ALBUFEIRA PROJECT

Created to promote and protect the good status of shared water bodies between Spain and Portugal, for their protection and sustainable use.



## 01 The project

Project, partners and relevant data presentation

## 02 Goals

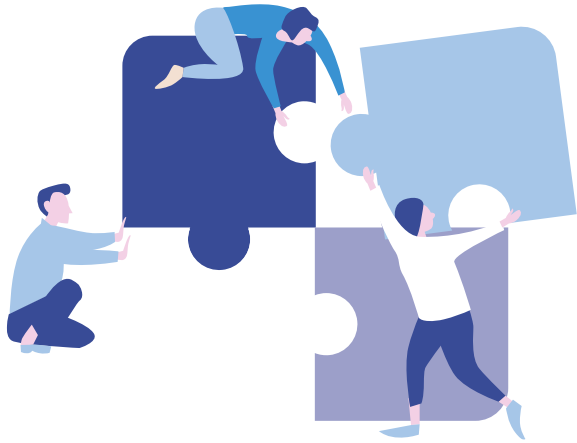
Advancing towards the coordinated implementation of the EU water directive between Spain and Portugal

## 03 Activities

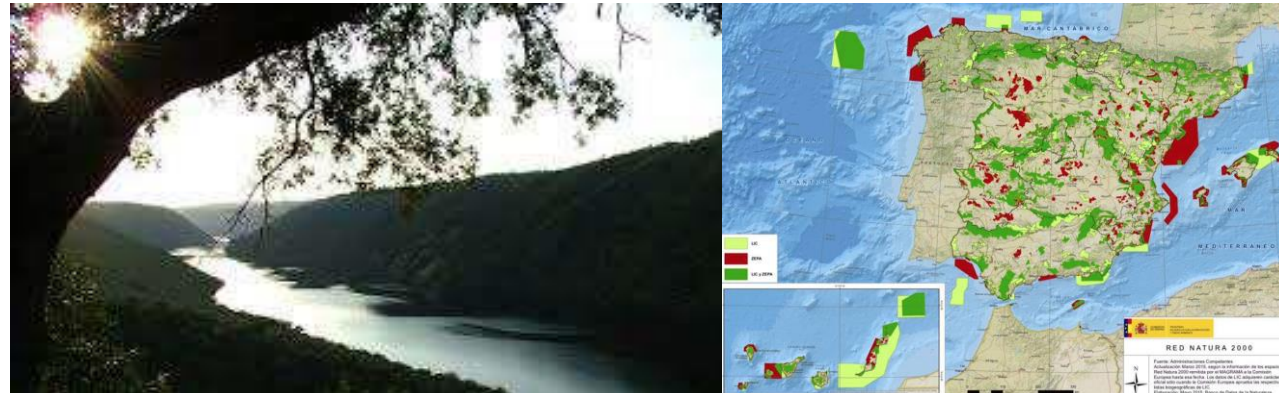
Project structured in 6 different activities

# ALBUFEIRA PROJECT

Designed to promote and protect the good conditions of transboundary water bodies in Mino–Sil, Duero, Tajo and Guadiana river basins, and their associated ecosystems.



- By harmonizing the methodologies for the evaluation of the ecological status or potential, and the definition of measures to achieve the environmental goals for the WBs.
- By improving the management of water-dependent protected areas, by means of methodologies that integrate the requirements of the water&biodiversity directives



# GOALS

## Specific objectives



### KNOWLEDGE

About the status or the ecological potential of transboundary water bodies, based on **common criteria** that allow evaluating the degree of conservation of water-dependent flora and fauna species and Habitats.



### COORDINATION

Optimizing the methodologies and the data resources of the entities involved in **water management and planning**, and improving the tools for the shared management of transboundary natural resources



### AWARENESS RAISING

About the importance of water resources in **transboundary water&land** as a joint source of environmental functions and services, which must be protected and used in a sustainable way

# ALBUFEIRA PROJECT

**68** shared WBs: rivers, reservoirs, and transitional waters

**4** basins districts

**58 000** hectares of protected areas integrated in Natura 2000 Network in Spain and Portugal



# ALBUFEIRA PROJECT

Co-financed by the European Regional Development Fund (ERDF) through the Interreg VA Spain Portugal Program (POCTEP) 2014-2020.

## PARTNERS



Ministerio para la Transición Ecológica y el Reto Demográfico



Agência Portuguesa do Ambiente (APA)



Centro de Estudios y Experimentación de Obras Públicas (CEDEX)



Instituto Superior de Agronomia da Universidade de Lisboa (ISA)



Instituto Politécnico de Leiria

# ALBUFEIRA PROJECT

The Albufeira project is part of:



Βερίπυρ θφπ Ć

“Sustainable growth **through** cross-border **cooperation** for risk **prevention** and improved **management** of natural resources”



Длі о θυμ πθνї ι υπї Ď

“Preserving and protecting the environment and promoting resource efficiency”.

# ACTIVITIES

- 1 Harmonization of methodologies for monitoring the ecological status or potential of WBs.
- 2 Monitoring the status or ecological potential of WBs for joint assessment.
- 3 Improvement in the integration of the objectives of the WFD and the HD.
- 4 Increasing awareness about cooperation in shared river basins.
- 5 Financial management of the project, coordination, and evaluation and monitoring of results.
- 6 Integration of the communication and image plan, web page and seminars.

# ACTIVITIES

1

Harmonization of methodologies for monitoring the status or ecological potential of WBs, with the aim of identifying and reducing discrepancies.

**METHODOLOGY:** Cross-border working group that analyzes existing procedures and tools.

**RESULTS:** Common intercomparison and “translation” of the indices and the sampling protocols to be applied, in the stations and control points selected to implement the experimental plan of activity 2.

**DOCUMENT:** Joint methodology for monitoring the status or ecological potential of shared river and transitional WBs.

EU_CD_RB	Spain Water body	Spain code	LNG	LAT	Sampling date Spain	Site code	Site name	Fishes ES : EFi+	
								EQR	Quality
Guadiana	Arroyo Tamujoso	ES040MSPF000134030	-6,959	39,030	07/10/2019	19P/50	Arroyo Tamujoso		
Douro/Duero	Regueiro das Veigas desde cabecera hasta	ES020MSPF000000254	-7,104	41,939	14/11/2019	020/02 (ex-D	Contim		
Guadiana	Rio Abrilongo	ES040MSPF000134070	-7,151	39,175	29/06/2020	190/50	Tagarraís	0,51	*
Douro/Duero	Rio Águeda desde cabecera hasta el emb	ES020MSPF000000634	-6,794	40,335	24/10/2019	12Q/50	Lajeosa	0,77	
Douro/Duero	Rio Águeda desde confluencia con la Ribe	ES020MSPF000000525	-6,902	40,989	16/07/2020	07P/56	Areeiro	0,60	
Guadiana	Rio Ardila III	ES040MSPF000120880	-7,013	38,196	19/11/2019			0,13	
Douro/Duero	Rio Calabor desde cabecera hasta fronter	ES020MSPF000000270	-6,713	41,961	22/10/2019	02Q/05 (ex-C	Aveleda	0,85	*
Douro/Duero	Rio de la Gamoneda desde cabecera hasta	ES020MSPF000000267				02P/50	Parâmio		
Guadiana	Rio de Salareja	ES040MSPF000141200	-7,103	38,041	01/11/2020	250/53		0,75	
Douro/Duero	Rio del Fontano desde cabecera hasta fro	ES020MSPF000000255	-6,627	41,951	21/10/2019	Onor_1	Rio de Onor	0,25	
Tejo/Tajo	Rio Erjas Cabecera	ES030MSPF1009010	-7,009	40,125	04/10/2019	Torto_1	Torto_1		
Tejo/Tajo	Rio Erjas entre puntos frontera	ES030MSPF1008010	-6,950	40,112	14/07/2020	13P/50	Pulga	0,68	
Tejo/Tajo	Rio Erjas medio entre puntos frontera	ES030MSPF1007010	-6,982	39,817	04/11/2019	15P/01	Segura	0,98	
Guadiana	Rio Gevora I - Gevorete	ES040MSPF000133810	-7,237	39,238	06/11/2019	18N/50	N. Sra da Lapa	0,56	
Guadiana	Rio Gevora I - Quinta	ES040MSPF000133810	-7,216	39,256	06/11/2019	18N/54	Quinta	0,73	
Guadiana	Rio Gevora I - Riscos	ES040MSPF000133810	-7,041	39,122	30/06/2020	190/02	Xévora	0,36	
Guadiana	Rio Gevora II	ES040MSPF000140000	-6,939	39,012	07/11/2019		Monte Xévora	0,00	
Guadiana	Rio Godolid II	ES040MSPF000140500	-7,169	38,279	02/11/2020			0,34	
Minho/Miño	Rio Laboreiro	ES010MSPFES13MAR002490	-8,184	41,950	12/11/2019	02H/51	Ribeiro Baixo	0,00	*
Douro/Duero	Rio Manzanás desde aguas arriba del pue	ES020MSPF0000000282	-6,519	41,880	23/10/2019	02R/01 (ex-D	Guadramil	0,68	
Guadiana	Rio Murtigas II	ES040MSPF000140900	-6,958	38,150	02/07/2020			0,31	
Douro/Duero	Rio San Lourenzo desde cabecera hasta la	ES020MSPF0000000240	-7,171	41,984	09/09/2020	020/01	Pte Sta Rufina	0,82	
Tejo/Tajo	Rio Sever de cabecera al punto fronterizo	ES030MSPF1029010	-7,325	39,475	05/11/2019	17N/01	Beirã	0,67	
Tejo/Tajo	Rio Sever desde pto. fronterizo a E. Cedillo	ES030MSPF1028010	-7,437	39,540	13/07/2020	16M/50	Pobreza	0,58	
Douro/Duero	Rio Tâmega desde confluencia con rio Vila	ES020MSPF000000224	-7,428	41,834	08/09/2020	02M/50	CERDEIRA	0,00	
Douro/Duero	Rio Tâmega desde confluencia con rio Vila	ES020MSPF000000224	-7,428	41,834	08/09/2020	03M/04	Villarinho	0,00	
Minho/Miño	Rio Trancoso	ES010MSPFES491MAR002140	-8,189	42,135	12/11/2019	01H/04	Barxas	0,83	
Douro/Duero	Rio Tuela y afluentes desde cabecera hast	ES020MSPF000000239	-6,903	41,966	22/10/2019	02P/02	Pte Couço	0,68	*
Douro/Duero	Rio Turones desde limite LIC y ZEPA "Arrib	ES020MSPF0000000564	-6,825	40,842	16/07/2020	08Q/01	Escarigo	0,11	
Douro/Duero	Rio Turones desde punto donde hace front	ES020MSPF0000000581	-6,811	40,703	24/10/2019	09Q/50	Vale Largo		
Douro/Duero	Rivera de Dos Casas desde limite de LIC y	ES020MSPF0000000563	-6,803	40,858	15/07/2020	ARHN_23	Almofala	0,67	
Guadiana	Rivera del Chanza III	ES040MSPF000141400	-7,410	37,762	01/07/2020			0,56	

# ACTIVITIES

2

**Validation of methodology and protocols developed in activity 1 for monitoring the ecological status/potential of WBs for joint assessment.**

**METHODOLOGY:** Cross-border technical team, which will implement the joint experimental program by the team from Spain and Portugal.

**RESULTS:** Collection of samples and data defined in the agreed protocols, sending pairs of samples / or exchanging data between Portugal and Spain, so each country can calculate its indices on the same information.

**DOCUMENT:** Periodic reports of the experimental monitoring program and index correlation report. In the case of HMWBs, work will be carried out to determine the evaluation of the ecological potential through the development of a catalog of mitigation measures.

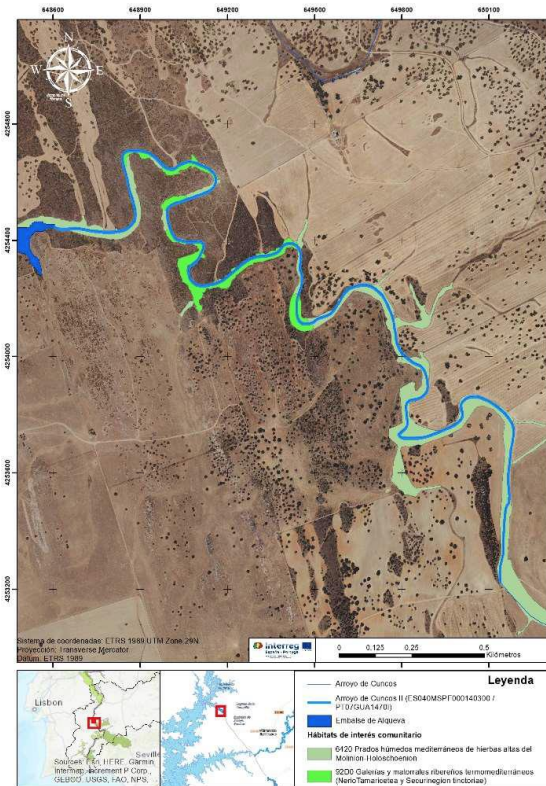


# ACTIVITIES

## 3

Integrate the requirements of the Habitats Directive and the WFD, for its common application by both States in the management of shared water bodies.

- ✓ Compilation of cartography and adaptation to water bodies. Inventory update and improvement.
- ✓ Creation of GIS layers that facilitates the geospatial record of habitats and species.
- ✓ Literature review and analysis of the specific ecological requirements of water-dependent species/habitats.
- ✓ Development of a methodology that allows integrating WFD objectives and the environmental objectives of protected areas.
- ✓ Identification of the actions to be included in the PoMs of the RBMPs and in the N2000 management Plans.
- ✓ Identification of the routes of spread of invasive alien species.
- ✓ Development of monitoring programs for invasive alien species of concern to the EU.
- ✓ Establishment of early detection, monitoring and action protocols.



# ACTIVITIES

4

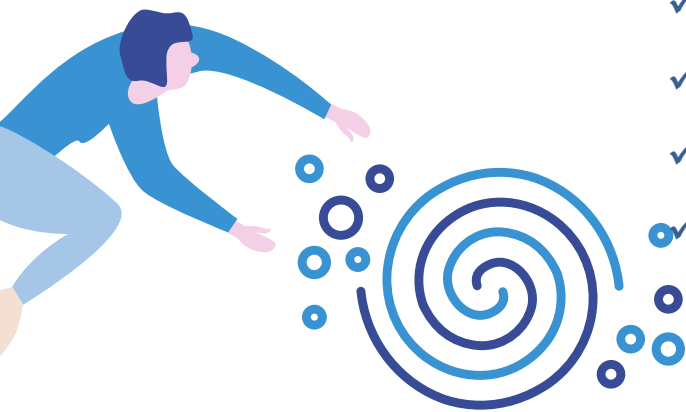
**Promote knowledge and awareness about the importance of water resources in the transboundary areas, accordingly with the Albufeira Convention.**

## TRAINING ACTIONS :

- ✓ Implementation of the protocol and the shared monitoring program in transboundary basins.
- ✓ Training of managers of Natura 2000 Network.
- ✓ Organization of four scientific-technical seminars.

## AWARENESS ACTIONS:

- ✓ Planning of activities in schools.
- ✓ Development of users' fora.
- ✓ Organization of a traveling exhibition in town halls
- ✓ Editing of informative and didactic material in Spanish, Portuguese and English.



# ACTIVITIES

5

**Financial management of the project, coordination, and evaluation and monitoring of the results, with the creation of a Steering Committee (CdD).**

**METHODOLOGY:** Planning of activities, putting together the planning tasks carried out by all partners and coordinating them; distribution of tasks among partners, especially in those planned actions in which several of them participate; complete follow-up of the execution of the actions.

**RESULTS:** Technical and operational monitoring by the Joint Working Group (GdTC)

**DOCUMENTS:** Dashboard, procedures manual, quarterly monitoring reports, mid-term evaluation report, final evaluation report.



# ACTIVITIES

## 6 Integration of communication and image plan, web page and seminars.

- ✓ Preparation of the Project Communication Plan
- ✓ Project identity design
- ✓ Informative online brochures
- ✓ Project web page
- ✓ Report of the project on the Albufeira Convention website
- ✓ Report of the project on the website of each of the beneficiaries
- ✓ Presence in social networks and other Internet portals and fora
- ✓ Organization of the project closing day



# BUDGET



Budget (€): 1,64 M€.



Amount co-financed by ERDF: 1,23 M€

# Aw ay to make Europa

---

Co-financed by the European Regional Development Fund (ERDF)  
through the Interreg VA Spain-Portugal Programme (POCTEP) 2014-2020



[www.poctepalbufeira.org](http://www.poctepalbufeira.org)

